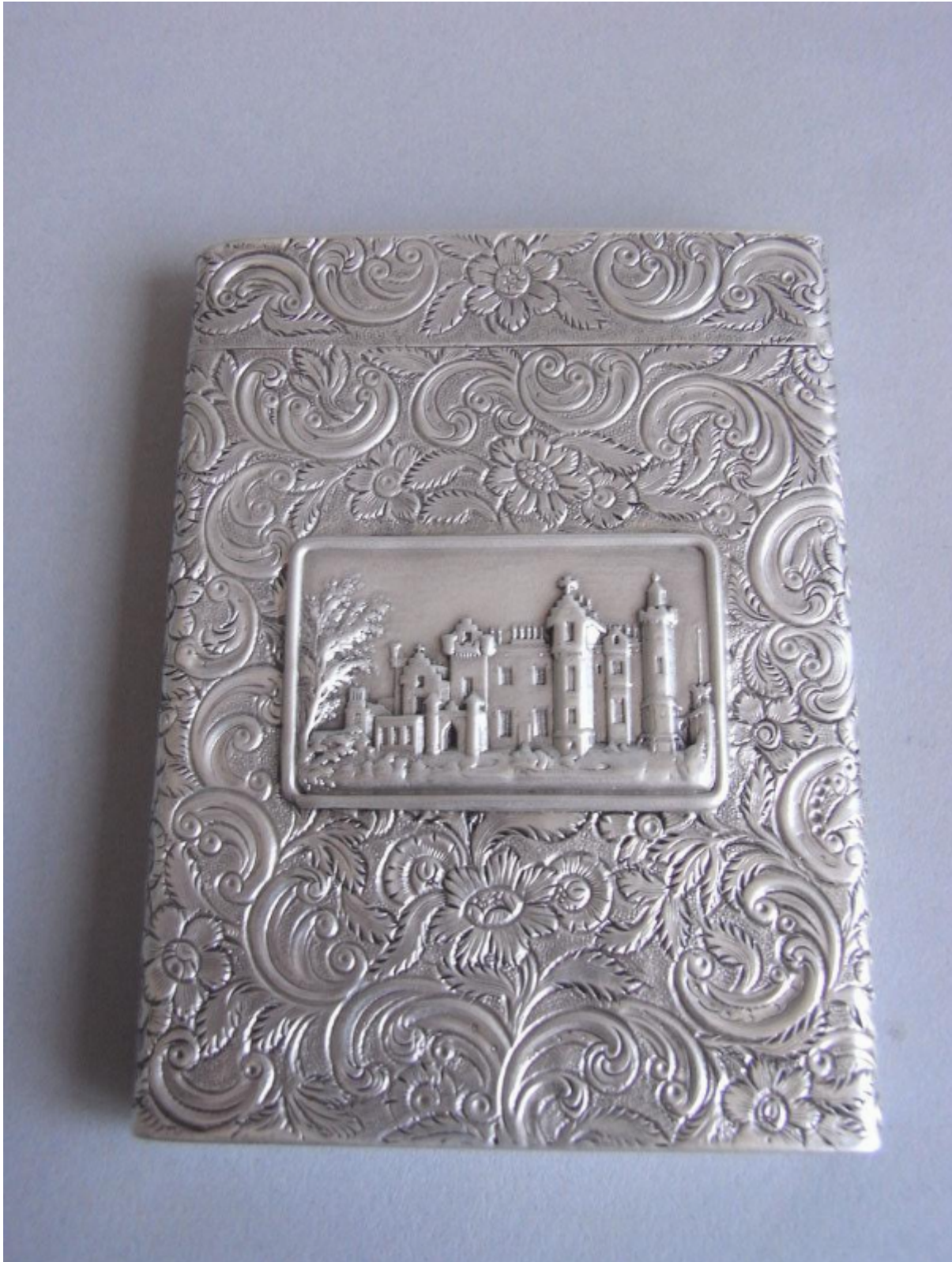


A rare William IV Card Case depicting Abbotsford House made in Birmingham in 1835 by Taylor & Perry.

£1,450



## Description

This early example of a card case is rectangular in form and is chased all over with crisp foliate scrolls and flower heads on a matted ground. The front displays a rectangular panel depicting Abbotsford House and the reverse a vacant cartouche. Abbotsford House was the home of Sir Walter Scott, the foremost literary figure of his day and the view on the case is from the South Court front. Scott purchased the farm land on which he was to build Abbotsford in 1811. It lay on the bank of the Tweed near an old ford and had once belonged to the monks of Melrose - hence the name of Abbotsford. With William Atkinson as architect, Scott pulled down the old farmhouse in 1822 and began a new home. He was first able to move into part of it in 1824. He died there on 21st September, 1832. A west wing was added to the house in the 1850s by Hope Scott.

Length: 3.6 inches, 9cm.

Width: 2.75 inches, 6.9cm.