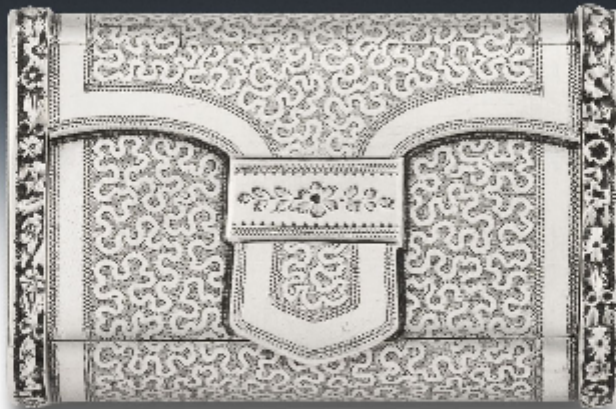


An extremely rare George III Purse Snuff Box made in Birmingham in 1817 by Joseph Willmore.

Sold



Description

The Snuff Box is finely modelled as a purse or satchel with raised central section, engraved to simulate the clasp. Each end displays a raised outer floral and foliate band enclosing beautiful wriggle work designs.

Each end is also decorated with prick dot and scratch engraved decoration and the reverse displays a rectangular cartouche containing a detailed double Crest. The Crests relate to the Vane & Fitzroy families, as used by the Dukes of Cleveland. The interior displays fine, original, gilding and crisp marks.

Vinaigrettes modelled in this form are seen often, however to find a snuff box is extremely rare. We have pictured a vinaigrette alongside, so that you can get a sense of the size. This piece is in excellent condition and most condition and has most probably not seen much use over the years. A similar example is contained within the "Lion" Collection of Boxes and is illustrated on page 210 of the catalogue. Length: 2.6 inches, 6.5 cm. Width: 1.55 inches, 3.88 cm. Depth: 0.6 inches, 1.5 cm.