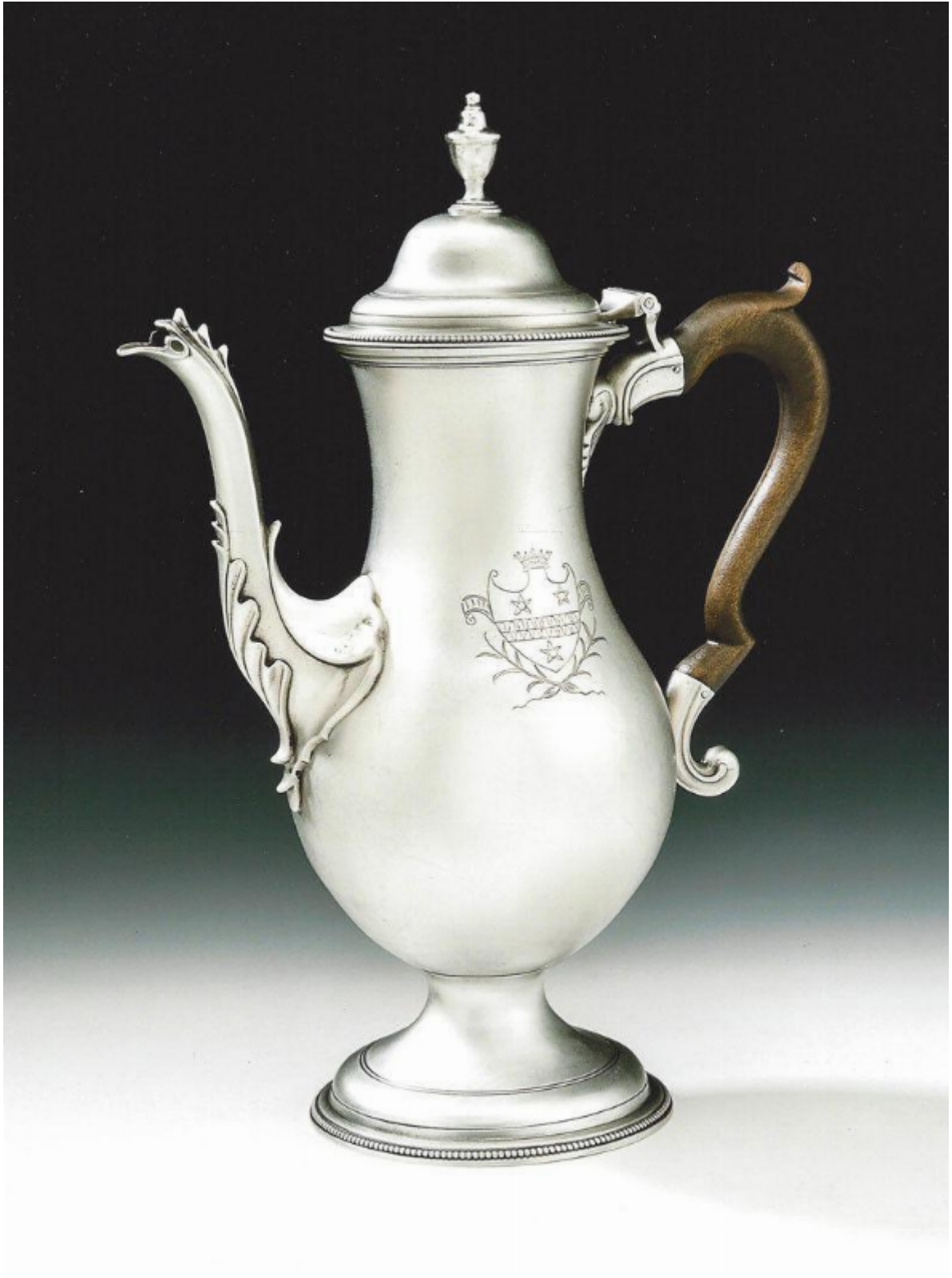


HESTER BATEMAN. A very fine and rare George III Coffee Pot made in London in 1781 by Hester Bateman.

Sold



## Description

The Coffee Pot stands on a circular pedestal foot decorated with beading and reeded bands. The main body is baluster in form and rises to a slightly everted rim. The cast spout is beautifully shaped and decorated with leaf capping. The silver and fruitwood handle is attached to the main body with a shell and lozenge shaped moulding. The high domed hinged cover is decorated with a reeded and beaded band and terminates in a Neo-Classical urn finial. The Coffee Pot is in excellent condition and is fully marked on the side of the main body and with the makers mark and sterling mark on the cover. The front of the main body is engraved with a shield shaped Armorial with scrolls on either side, crossed branches below and a Coronet above. The Arms are those of the Barugh family, who originated from the village of Barugh in North Yorkshire. There were numerous branches in North Yorkshire in the 18th Century and the family could also be found in Gloucestershire, Oxford and London. Some were wealthy merchants and many used the appendage, Gent after their names. The engraving has a definite Provincial feel to it and although purchased in London was possibly engraved in North Yorkshire, perhaps at Richmond as several members of the family were within easy reach of this small town. Near identical examples are illustrated on plate 3 and 4 of David Shures Book, Hester Bateman 1959 Edition.

Height: 12 inches, 30cm

Length, spout to handle: 8.5 inches, 21,25cm

Weight: 29oz.