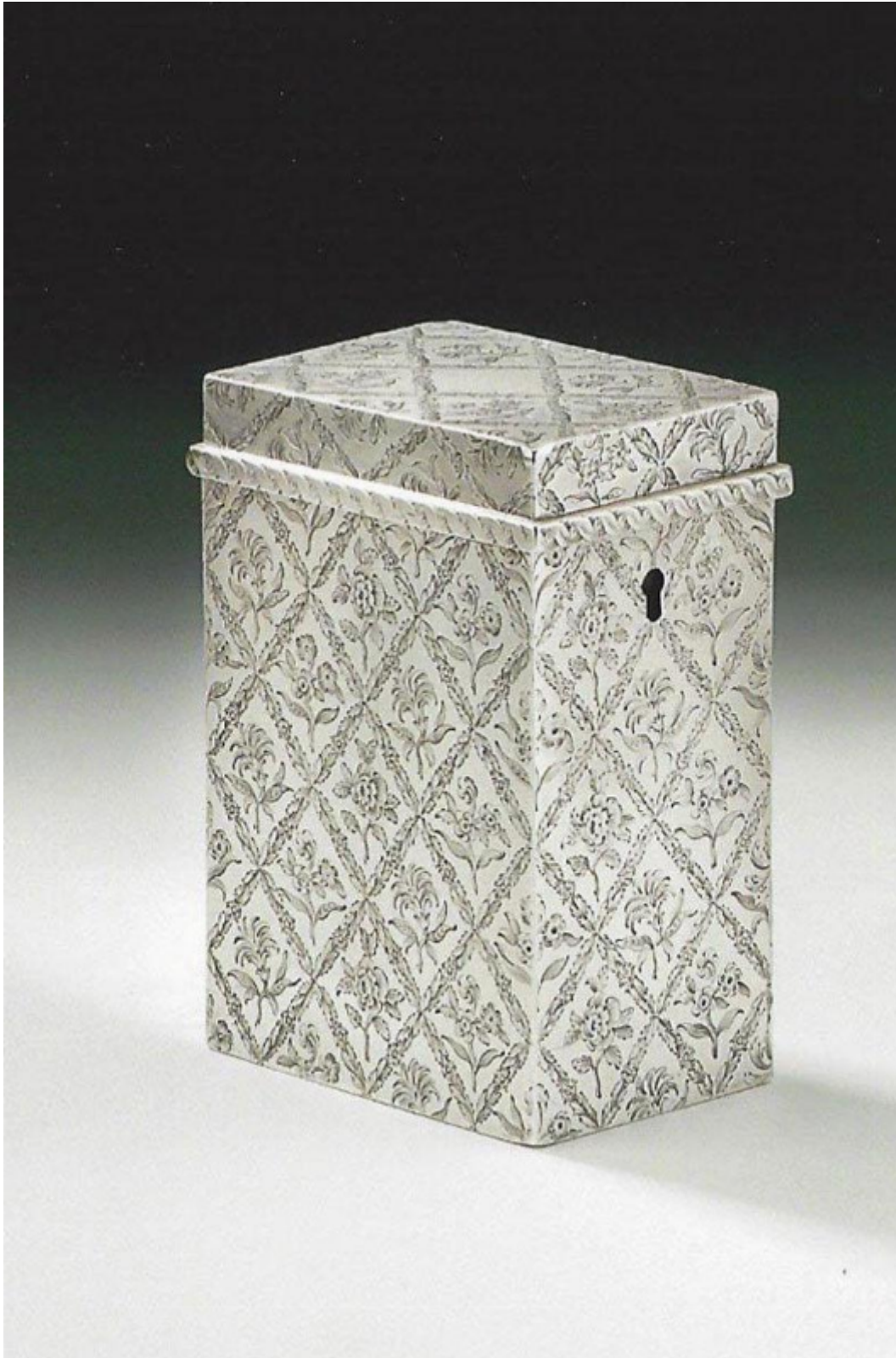


An important early George III Spitalfields Silk Tea Caddy made in London in 1767 by Parker & Wakelin.

Sold



Description

The Tea Caddy is oblong in form and displays a protruding upper band which is engraved with twisted ropework designs. The rest of the main body is beautifully engraved, to the highest standard, with diamond motifs containing a floral sprig. It is generally accepted that this design was copied from designs which were produced by the silk weavers in Spitalfields during the 18th century and it is referred to as Spitalfield silk engraving. The cover displays a vacant diamond shaped cartouche and this piece is in excellent condition. The base has a full set of hallmarks and the cover is marked with the makers mark and sterling mark. The Caddy also has a keyhole and interior lock. These type of Caddies are contained within most of important museum collections around the World. The Victoria & Albert Museum have a most outstanding example made by Pierre Gillois, which is illustrated in Adam Silver by Robert Row, figure 27A.

Parker and Wakelin were prolific quality makers and were patronised by King George III and the Prince of Wales, later George IV. Their work is contained within the English Royal Collection.

Height: 4.5 inches, 11.25cm.

Length: 3.45 inches, 8.63cm.

Width: 2.45 inches, 6.13cm.

Weight: 13oz